

Littlemore

Statement of Service Performance

Littlemore Trust 2022 – 2023

www.littlemore.co.nz



littlemorenz



littlemorenz

A little initiative. *A big difference*

At Littlemore, we support babies during their first, critical year of life by collecting, sorting, and providing essential clothing, blankets, furniture, equipment, nappies, books, toys ... and more.

With a lot of help from our donors, supporters, and volunteers, we provide high-quality, pre-loved baby gear to whānau in need so that newborn babies can have a little more comfort and care.

Our vision

Tāmaki Makaurau whānau have the essentials they need to nurture their babies and keep them safe and warm.

Our values



Community

Community is at the heart of our work. We believe every whānau has the fundamental right to quality resources to give their newborn child every opportunity to thrive. We make a difference by distributing life changing baby essentials across Tāmaki Makaurau to our grassroots partner organisations serving local communities in need.



Sustainability

Our generous donors actively seek to live a more sustainable life by disposing of their high-quality, pre-loved baby items sustainably and 'doing some good' at the same time. By re-purposing baby essentials, we rehome these goods to benefit those most in need, reduce textile and plastic waste and ensure a positive environmental impact for our future whānau.



Inclusion

Through diversity, partnership and collaboration we gain strength, creativity, and a passion to maximise impact in the communities we support. By working alongside others in the communities we serve, we make a tangible difference.

We acknowledge the role of Māori as tangata whenua in New Zealand and seek to uphold the principles of Te Tiriti o Waitangi.

Our mission

Facilitating the sharing of baby essentials so whānau affected by hardship have what they need to care for their babies.

Re-purposing baby essentials in a sustainable and inclusive way, contributing to a greener future for Aotearoa.

Our goals

A city of sharing and caring

Tāmaki Makaurau, is a city where whānau share their resources and care for those who need help the most.

All babies are safe and warm

Whānau affected by hardship in Tāmaki Makaurau, have what they need to nurture their babies and keep them safe and warm.

A healthier future for all

By recycling, up-cycling, and re-purposing textile and plastic, waste is minimised, contributing to a healthier environment and a greener future for Aotearoa.



A little message *from our Chair*

Ko Tongariro te maunga, Ko Taupo nui a Tia te roto, Ko Te Arawa te waka
Ko Hinemihi tōku hapū, Nō Tūwharetoa ahau
Ko Adrienne Godfrey tōku ingoa

Tēnā koutou, tēnā koutou, tēnā tātou katoa

I would like to acknowledge my predecessor Natalie Vincent, our outgoing Chair who retired in March 2023, for her many years of invaluable commitment to Littlemore and those we support. Ngā mihi nui ki a koe Natalie.

On behalf of the Trustees and as the new Chair of Littlemore, I present to you the 2023/24 Annual Report and Financial Statements for Littlemore Trust.

Last year, we saw our communities begin to move forward after the pandemic and were then hit with multiple severe weather events which pushed many of our already vulnerable whānau into a greater vulnerable position. Now, with the ever-increasing cost of living, demand for our service continues to grow and the need is more present than ever. Whānau have had their lives turned upside down and are having to choose between paying for power, food, petrol, clothing for their pēpi and basic everyday necessities. Our response included prioritising practical support to highly deprived households in these communities to assist recovery efforts alongside other key supporting agencies. During this time, we made extra effort to attract and source key baby essentials on a rolling basis, as a matter of urgency. This ensured that we had a consistent supply on hand to distribute to our partners immediately. Consequently, we carried out an intensive volunteer recruitment campaign to provide the operational support needed.

Our latest partnership with Counties Manukau Police has been immensely humbling. Helping to set up their first tamariki resource room, to support Police when they have sudden care of children while dealing with urgent enquiries and liaising with other partner agencies to organise longer term arrangements.

I take pride in supporting the team of Littlemore to understand how our Trust Deed honours the

principles of Te tiriti o Waitangi, and how this aligns with our core values. Embracing tikanga Māori lends to how we now connect with those in need in ways that are meaningful to them.

We give thanks to our community of volunteers, donors, funders, partners and supporters for your ongoing commitment to supporting whānau across Tāmaki Makaurau to have the essentials they need, to nurture their babies and keep them safe and warm. This would not be possible without you all.

I give special thanks to Sarb Lester, our assiduous Trust Manager, who has managed and led the growth of our organisation so well for many years. Your tireless work hasn't gone unnoticed. We are so grateful and lucky to have you.

Thank you to my fellow Trustee members, for trusting in me to become the new Chairperson, I am humbled and grateful to be here on behalf of Littlemore. Thank you for sharing your expertise and volunteering your time to help make Littlemore the best Trust that it can be.

Nāku te rourou nāu te rourou ka ora ai te iwi
Ngā mihi nui ki a koutou katoa.



Adrienne Godfrey
Trust Chair 2023

Changing little lives during tough times

The economic impact of the cost of living crisis and extreme weather events continues to bring significant challenges. As we navigate this period of disruption and change, the need in our community remains high.



287,542

Baby items were provided to whānau through donations.



6,021

Whānau with babies living in poverty and experiencing multiple disadvantages were supported.



913

Babies travelled safely through the supply of capsules, car seats and prams.



4,482

Babies were kept warm through the supply of clothing, footwear and blankets.



9,913

Community service hours donated by volunteers.

95%

Of donations were re-purposed to reduce textile and plastic waste (237,165 pre-loved goods).



1,897

Babies slept safely through the supply of safe cots, bassinets, mattresses and bedding.



5,684

Babies played safely through the supply of quality educational books, toys and general safety items.



109

Volunteers provided operational support.



\$3,853,460*

Worth of essential baby items were donated to whānau in need (up from \$2,379,367).



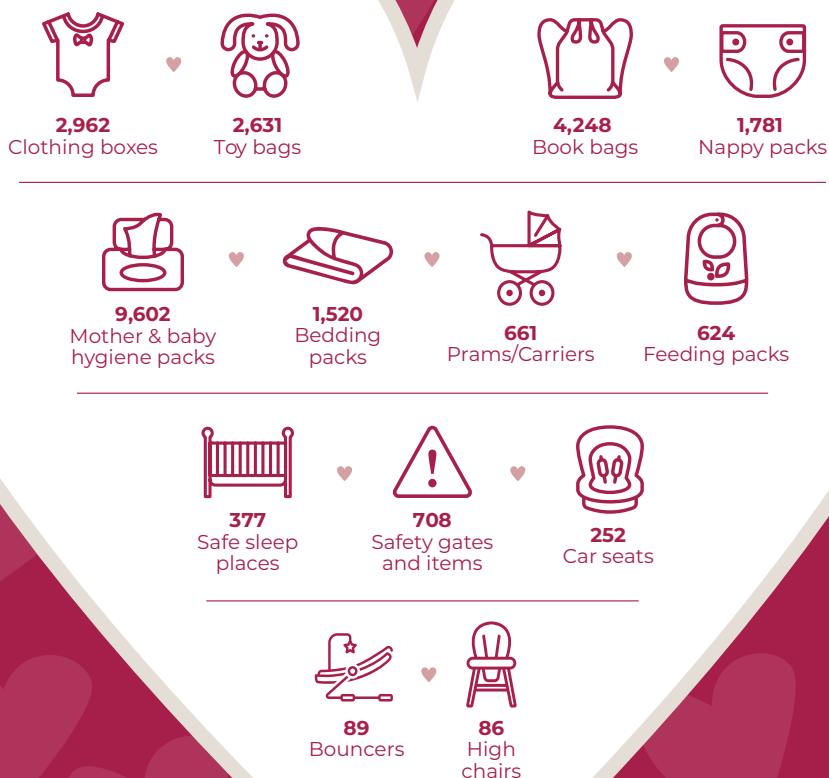
*Based on market value as at July 2022 and 2023.

Plus, we engaged and collaborated with local communities and organisations to reduce duplication of services, build cohesive communities and work smarter in the sector.

Our impact across *Tāmaki Makaurau*

It's amazing what a little aroha and care can achieve. Despite last year's challenges, Littlemore had a big impact on the lives of the tamariki we help across the Auckland region.

Essential items donated to *Auckland babies in need*



Partner distribution & donated goods

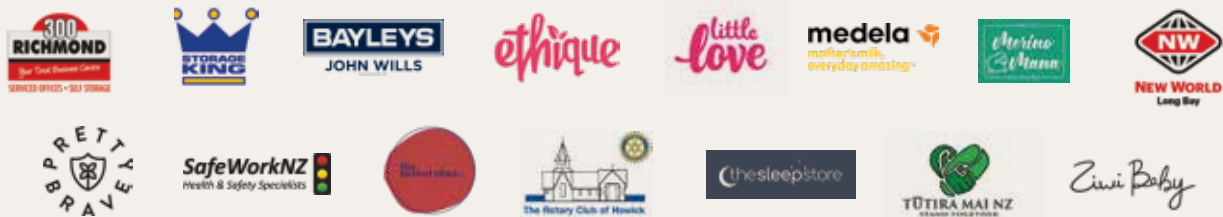
1 July 2022 - 30 June 2023

Partner	Deliveries	Donated
Anglican Trust for Women & Children	13	1,149
Auckland City Hospital	15	407
AWHI Healthy Homes	15	1,437
Belong Aotearoa	11	579
Counties Manukau Health	24	1,023
De Paul House	9	234
E Tipu E Rea Whānau Services	5	230
Family Success Matters	19	1,386
Kahui Tu Kaha	10	692
KidzFirst Community Health	23	613
Middlemore Hospital	24	1,142
Papakura Marae	48	2,727
Te Puna Hauora	14	164
The Fono	17	363
Turuki Healthcare	15	1,132
Youthline	12	475
Total	274	13,753
Special responsive distribution to other organisations		
Albany Emergency Hub	1	12
Counties Manukau Police	1	90
Dingwall Trust	1	43
Grace Foundation	1	36
Lifewise	1	41
Milford Emergency Hub	1	12
Mt Roskill Emergency Hub	1	14
Muriwai Emergency Hub	1	12
Ngā Tāngata Microfinance	1	8
North Shore Hospital	6	44
The Playtruck	3	530
Salvation Army Papakura	2	56
Salvation Army Waitakere	2	36
Total	22	934
Total	296	14,687
Number of donors	1,878	
Number of baby bundles donated	14,687	

A big 'thank you' to our generous supporters

We're more than a little grateful for the generosity and support we received from all our incredible supporters. You've helped us in so many ways, donating valuable time, resources, services, expertise, funds, and baby items, to helping spread the word about what we do.

Major Supporters



Trusts/Foundation



Key Businesses/Organisations

- Adventure Kids Early Learning Centre
- Auckland Quilt Guild
- Barfoot & Thompson (Browns Bay)
- Bateman Books
- Baypark Speedway
- Bays North Harbour Parents Centre
- Beanies for Babies NZ
- Campbells Bay Early Learning Centre
- Farmers
- Give a Kid a Blanket
- Her Harvest
- Kindness Collective
- Kiwi Family Trust
- Kristin School
- Little Doves Early Learning Centre
- Mairangi Bay Playcentre
- Make Give Live
- NZ Future Community Trust
- Parents Centre Aotearoa
- Playcentre
- Potton & Burton
- Premmie Knitting Club
- Seneca Group
- Sherwood Primary School
- The Bay Tree of Remuera & St Heliers
- The Little Heroes Project
- The Little Miracles Trust
- ThreadNZ
- University of Auckland
- Volunteering Auckland
- Waterford Retirement Village
- Westlake Girls High School
- Windsor Park Baptist Church
- Yarns
- Yartteeze

People

- All our donors
- All our community networks
- Our team of volunteers
- Our voluntary board members



Littlemore

littlemore.co.nz

Registered NZ Charity - CC53675. Incorporation number: 2646951